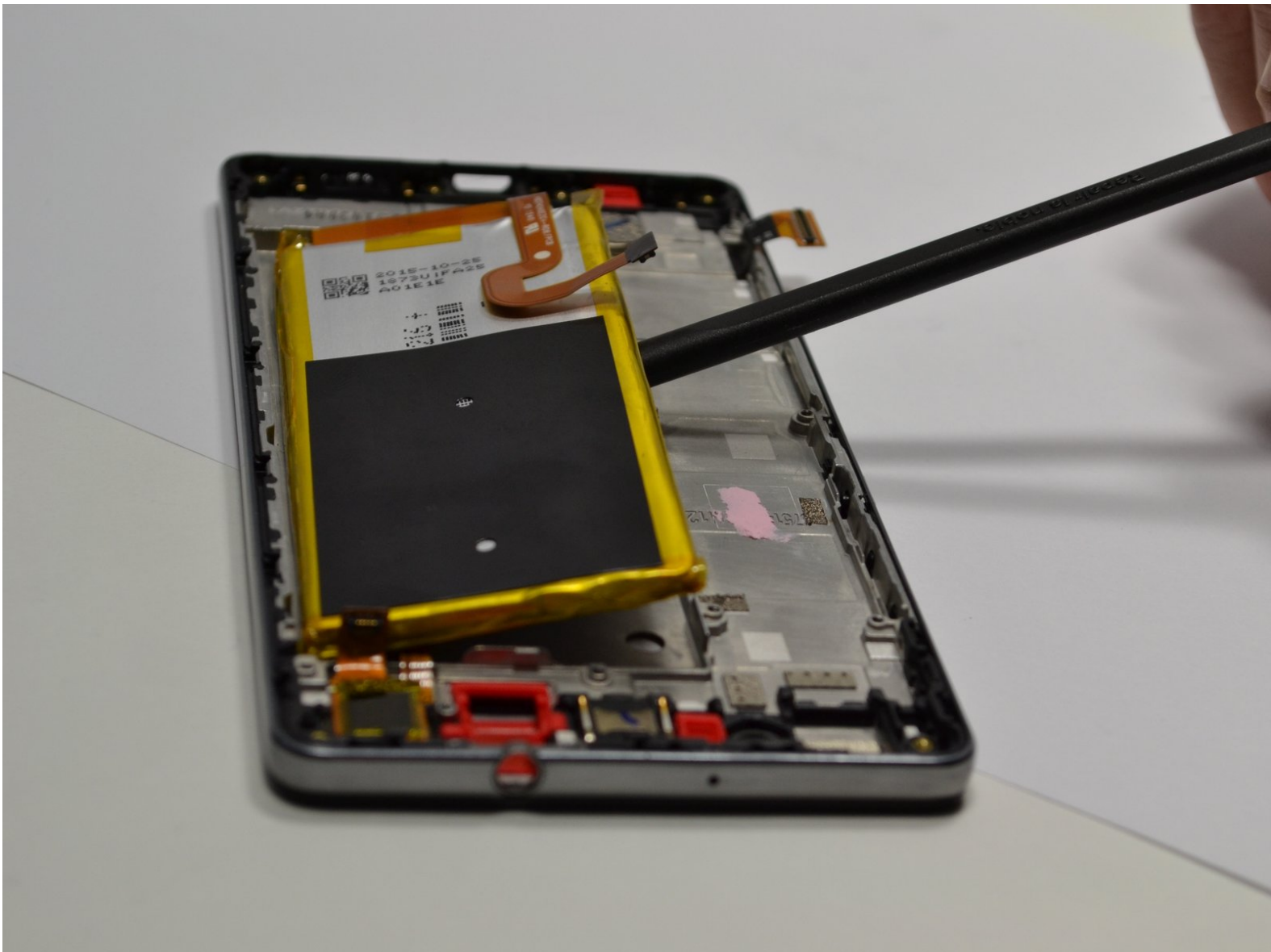




Huawei P8 Lite Battery Replacement

This guide will help you replace the battery inside your Huawei P8 Lite phone.

Written By: John Poffenberger



INTRODUCTION

This guide will help you replace the battery inside your Huawei P8 Lite phone.



TOOLS:

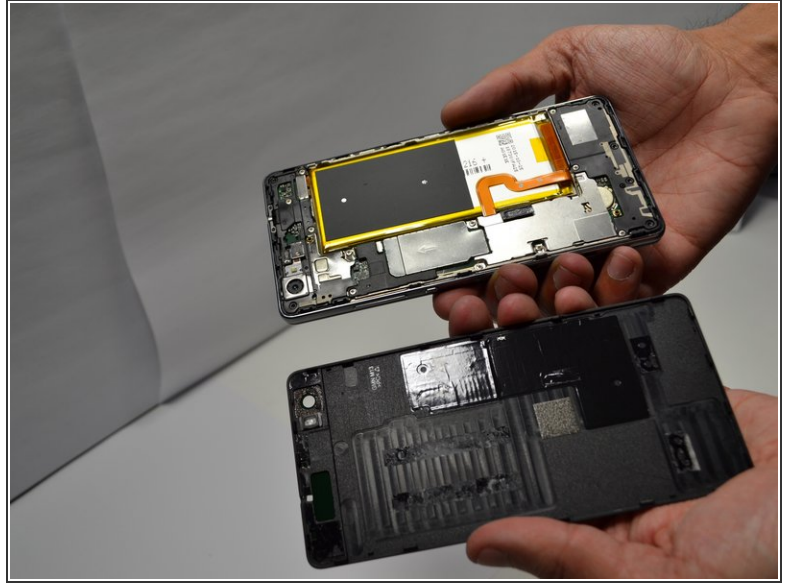
- [64 Bit Driver Kit](#) (1)
- [Spudger](#) (1)
- [Phillips #000 Screwdriver](#) (1)
- [T5 Torx Screwdriver](#) (1)



PARTS:

- [Huawei P8 Lite battery](#) (1)

Step 1 — Loudspeaker



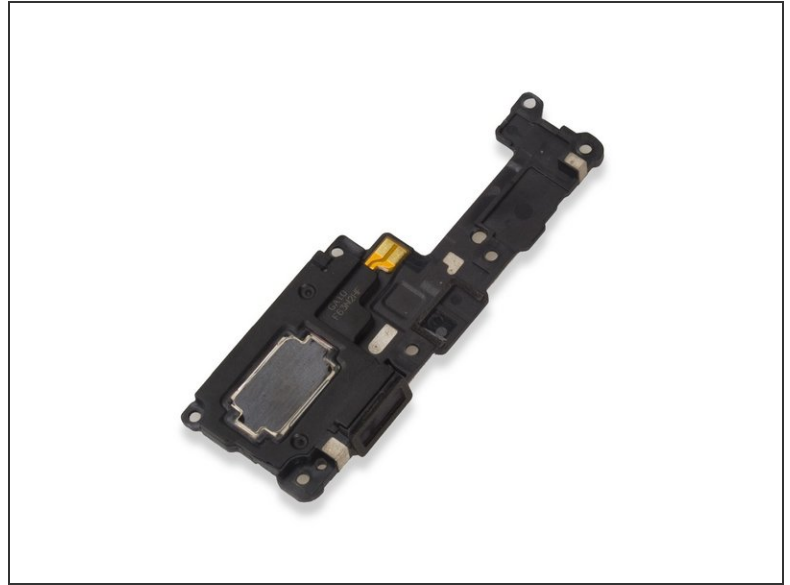
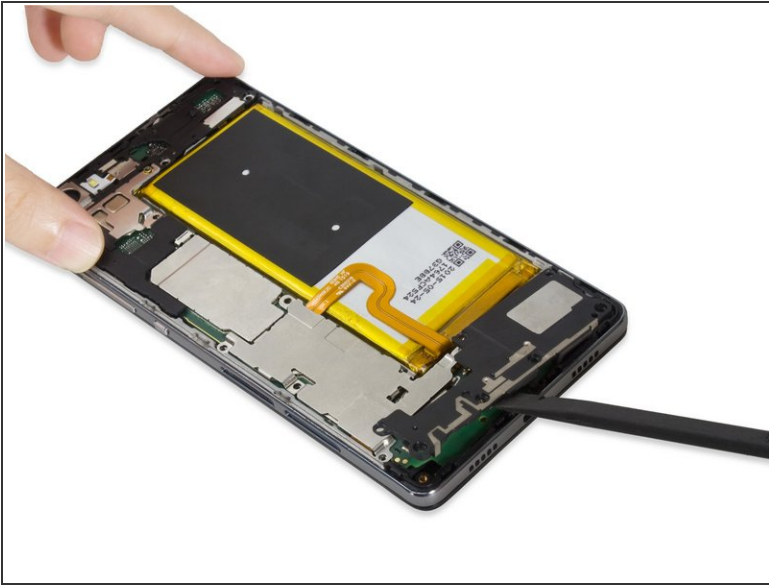
- Begin by removing the back cover of the device with the [Spudger](#). To prevent damage to the back cover, begin removing the cover half an inch to the right of the headphone jack and continue prying around the perimeter of the device.

Step 2



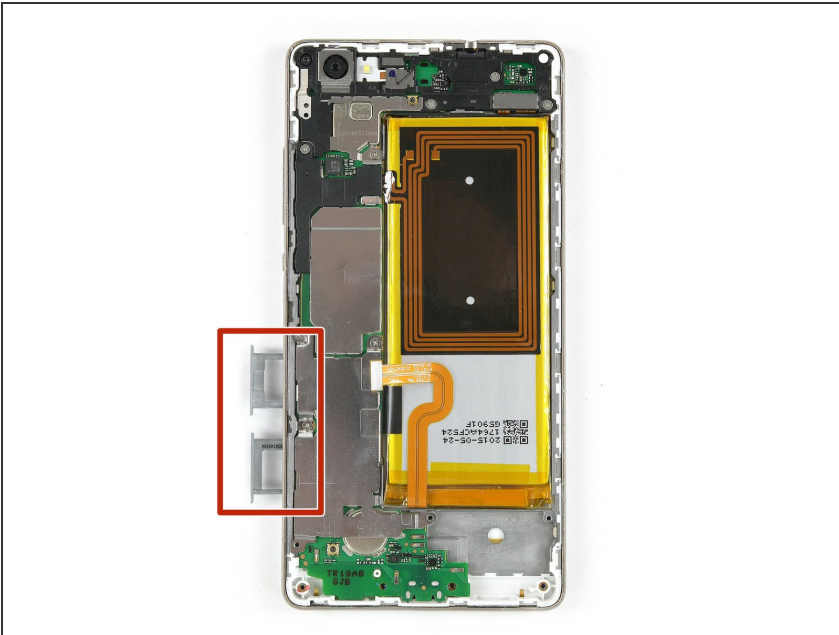
- Locate the Loudspeaker at the bottom of the device.
- Remove the four black screws using the [T5 Torx Screwdriver](#).
- Then use the [Phillips #000 Screwdriver](#) to remove the three silver screws.

Step 3



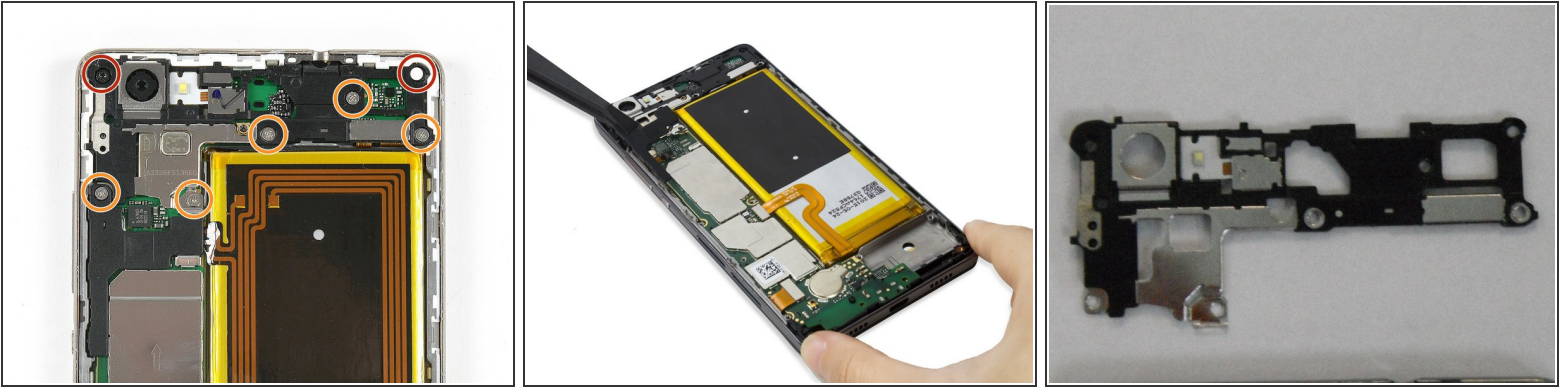
- Use the [Spudger](#) to gently remove the Loudspeaker from the device. Place the replacement Loudspeaker into the device.

Step 4 — Motherboard



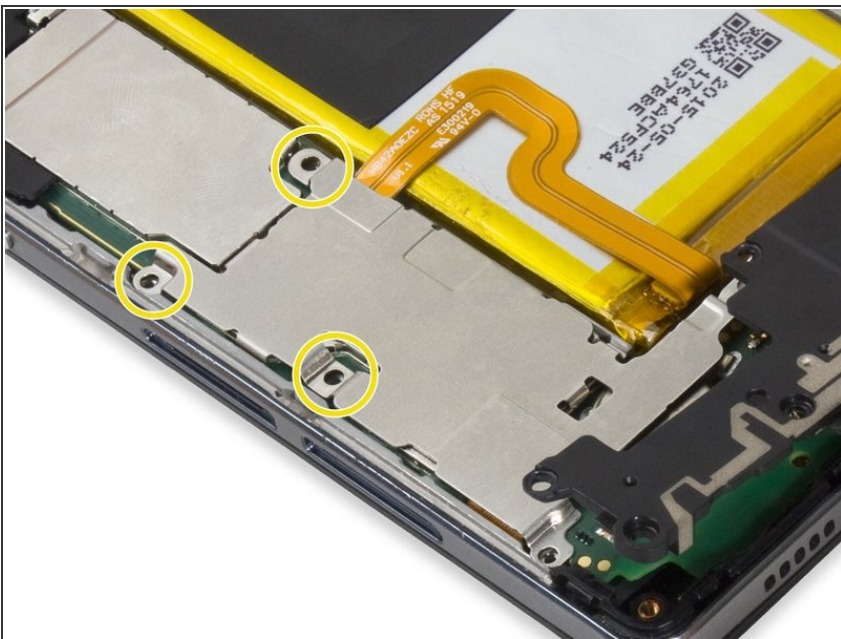
- Continue by removing the SIM and SD card trays on the side of the device.

Step 5



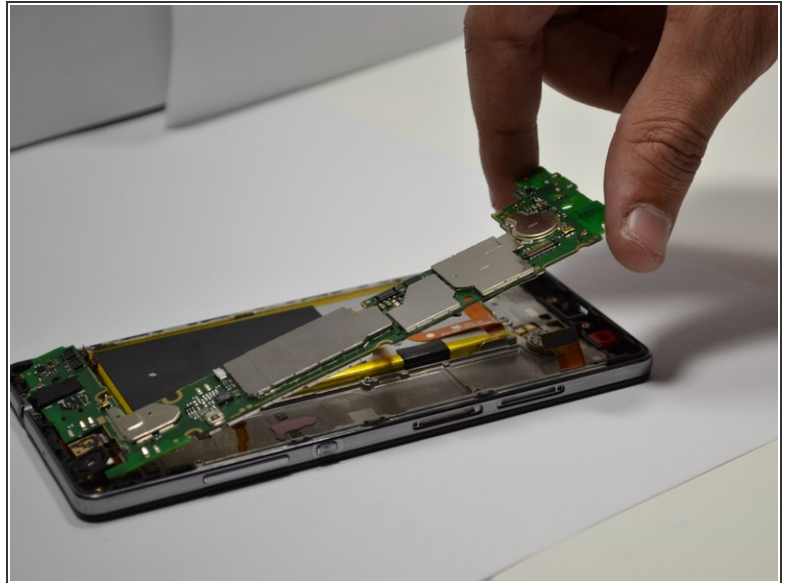
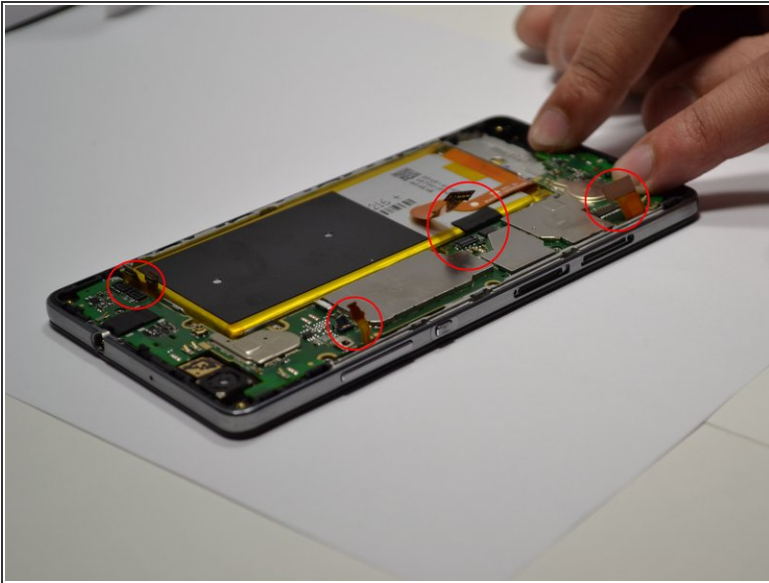
- Remove the two Torx T5 screws. One may be covered with a liquid indicator.
- Remove the five Phillips #000 screws.
- Take away both securing brackets covering the motherboard.
- ⓘ If your phone has an NFC antenna, taking away the cover will automatically free its flex connector from the motherboard.

Step 6



- Remove the three Phillips #000 screws on the silver panel.

Step 7



- Carefully separate the four connectors holding the motherboard in place.
- Remove the motherboard from the device.

Step 8 — Battery



- Locate the adhesive strip underneath the battery. Gently pull on the strip to loosen it enough to remove the battery from the device.

Step 9



- Use the [Spudger](#) to gently remove the battery. Then insert the replacement battery.

To reassemble your device, follow these instructions in reverse order.